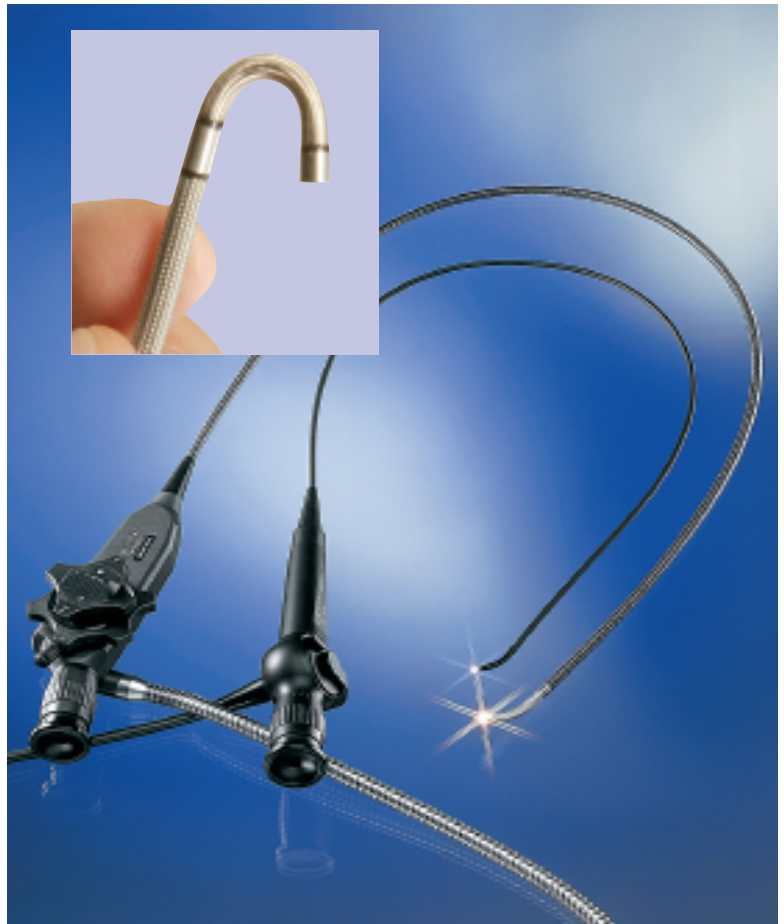


KARL STORZ FIBERSCOPES

Karl Storz Ultra-Thin fiberscopes fit through a hole as small as .025"

- Bright, high resolution images
- Diameters as small as .02"
- Working lengths up to 71"
- Diopter adjusts scope to your eyesight
- Telecam allows capture/storage of digital images
- Temperature resistant up to 80°C (176°F)
- Pressure resistance up to +5 bar
- Oil, fuel and solvent resistant



Ultra-thin Fiberscopes

Model	Diam	Length	DOV	FOV	Articulation	Sheath	Light Guide Umbilical
K 00502 AF1	0.5 mm/.02"	.20 m/7.87"	Direct (0°)	60°	None	Vinyl/PVC	Detachable LG
K 00504 AF1	0.5 mm/.02"	.40m/15.75"	Direct (0°)	60°	None	Vinyl/PVC	Detachable LG
K 00508 AF1	0.5 mm/.02"	.80m/31.5"	Direct (0°)	60°	None	Vinyl/PVC	Detachable LG
K 00510 AF1	0.5 mm/.02"	1m/39.37"	Direct (0°)	60°	None	Vinyl/PVC	Detachable LG
K 00520 AF1	0.5 mm/.02"	2m/78.74"	Direct (0°)	60°	None	Vinyl/PVC	Detachable LG
K 00902 AF1	0.9 mm/.035"	.20 m/7.87"	Direct (0°)	60°	None	Vinyl/PVC	Detachable LG
K 00904 AF1	0.9 mm/.035"	.40m/15.75"	Direct (0°)	60°	None	Vinyl/PVC	Detachable LG
K 00908 AF1	0.9 mm/.035"	.80m/31.5"	Direct (0°)	60°	None	Vinyl/PVC	Detachable LG
K 00910 AF1	0.9 mm/.035"	1m/39.37"	Direct (0°)	60°	None	Vinyl/PVC	Detachable LG
K 00920 AF1	0.9 mm/.035"	2m/78.74"	Direct (0°)	60°	None	Vinyl/PVC	Detachable LG
K 02508 AH1	2.5 mm/.10"	.75m/ 30"	Direct (0°)	80°	U/D180°/90°	Vinyl/PVC	1.8m/6'
K 02512 AH1	2.5 mm/.10"	1.2 m/48"	Direct (0°)	80°	U/D180°/90°	Vinyl/PVC	1.8m/6'
K 02550 AH1	2.5 mm/.10"	5m/197"(16.4')	Direct (0°)	60°	U/D60°/60°	Vinyl/PVC	No LG
M 020808 AH1	2.8 mm/.11"	.89m/ 35"	Direct (0°)	80°	U/D180°/90°	Tungsten	1.8m/6'
M 02812 AH1	2.8 mm/.11"	1.2m/ 48"	Direct (0°)	80°	U/D180°/90°	Tungsten	1.8m/6'

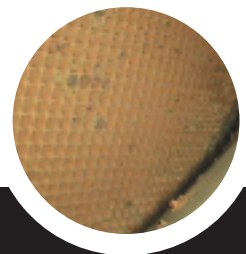
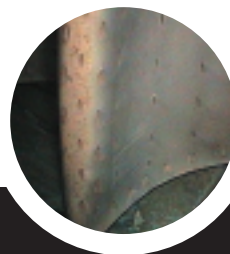
Standard Flexible Fiberscopes

Model	Diam	Length	DOV	FOV	Articulation	Sheath	Light Guide Umbilical
K 03504 AG1	3.5 mm/.138"	.35m/13.7"	Direct (0°)	70°	U/D180°/90°	Vinyl/PVC	1.8m/6'
K 03506 AG1	3.5 mm/.138"	.57m/ 22"	Direct (0°)	70°	U/D180°/90°	Vinyl/PVC	1.8m/6'
K 03508 AG1	3.5 mm/.138"	.76m/ 29.9"	Direct (0°)	70°	U/D180°/90°	Vinyl/PVC	1.8m/6'
K 03508 DG1	3.5 mm/.138"	.76m/ 29.9"	Side (90°)	100°	U/D180°/90°	Vinyl/PVC	1.8m/6'
K 03512 AG1	3.5 mm/.138"	1.2 m/48"	Direct (0°)	70°	U/D180°/90°	Vinyl/PVC	1.8m/6'
K 03518 AG1	3.5 mm/.138"	1.8m/ 70.8"	Direct (0°)	70°	U/D180°/90°	Vinyl/PVC	1.8m/6'
K 03504 AJ1	3.5 mm/.138"	.35m/ 13.7"	Direct (0°)	100°	U/D180°/90°	Vinyl/PVC	Detachable LG
K 03506 AJ1	3.5 mm/.138"	.57m/ 22"	Direct (0°)	100°	U/D180°/90°	Vinyl/PVC	Detachable LG
KA 03508 AJ1	3.5 mm/.138"	.76m/ 29.9"	Direct (0°)	100°	U/D180°/90°	Vinyl/PVC	Detachable LG
K 03508 AJ1	3.5 mm/.138"	.76m/ 29.9"	Direct (0°)	100°	U/D180°/90°	Vinyl/PVC	Detachable LG
K 03512 AJ1	3.5 mm/.138"	1.2 m/48"	Direct (0°)	100°	U/D180°/90°	Vinyl/PVC	Detachable LG
K 03518 AJ1	3.5 mm/.138"	1.8m/ 70.8"	Direct (0°)	100°	U/D180°/90°	Vinyl/PVC	Detachable LG
MA 04008 AG1	4.2mm/.165"	.76m/ 29.9"	Direct (0°)	70°	U/D180°/90°	Tungsten	1.8m/6'
M 04004 AG1	4.2mm/.165"	.35m/ 13.7"	Direct (0°)	70°	U/D180°/90°	Tungsten	1.8m/6'
M 04006 AG1	4.2mm/.165"	.57m/ 22"	Direct (0°)	70°	U/D180°/90°	Tungsten	1.8m/6'
M 04008 AG1	4.2mm/.165"	.76m/ 29.9"	Direct (0°)	70°	U/D180°/90°	Tungsten	1.8m/6'
M 04012 AG1	4.2mm/.165"	1.2 m/48"	Direct (0°)	70°	U/D180°/90°	Tungsten	1.8m/6'
M 04018 AG1	4.2mm/.165"	1.8m/ 70.8"	Direct (0°)	70°	U/D180°/90°	Tungsten	1.8m/6'
M 04004 AJ1	4.2mm/.165"	.35m/ 13.7"	Direct (0°)	100°	U/D180°/90°	Tungsten	Detachable LG
M 04006 AJ1	4.2mm/.165"	.57m/ 22"	Direct (0°)	100°	U/D180°/90°	Tungsten	Detachable LG
M 04008 AJ1	4.2mm/.165"	.76m/ 29.9"	Direct (0°)	100°	U/D180°/90°	Tungsten	Detachable LG
M 04012 AJ1	4.2mm/.165"	1.2 m/48"	Direct (0°)	100°	U/D180°/90°	Tungsten	Detachable LG
M 04018 AJ1	4.2mm/.165"	1.8m/ 70.8"	Direct (0°)	100°	U/D180°/90°	Tungsten	Detachable LG
K 05010 AG	5.0 mm/.197"	1m/39.37"	Direct (0°)	70°	U/D180°/90°	Vinyl/PVC	1.8m/6'
K 05018 AG	5.0 mm/.197"	1.8m/ 70.8"	Direct (0°)	70°	U/D180°/90°	Vinyl/PVC	1.8m/6'
M 06010 AG	6.0 mm/.236"	1m/39.37"	Direct (0°)	70°	U/D150°/150° R/L 120°/120°	Stainless Steel	1.8m/6'
M 06018 AG	6.0 mm/.236"	1.8m/ 70.8"	Direct (0°)	70°	U/D150°/150° R/L 120°/120°	Stainless Steel	1.8m/6'
M 09010 AL	9.0 mm/.354"	1m/39.37"	Direct (0°)	90°	U/D150°/150° R/L 120°/120°	Stainless Steel	1.8m/6'
M 09016 AL	9.0 mm/.354"	1.6m/ 62.9"	Direct (0°)	90°	U/D150°/150° R/L 120°/120°	Stainless Steel	1.8m/6'
M12010 AL	12 mm/.470"	1m/39.37"	Direct (0°)	90°	U/D150°/150° R/L 90°/90°	Stainless Steel	1.8m/6'
M12016 AL	12 mm/.470"	1m/39.37"	Direct (0°)	90°	U/D150°/150° R/L 90°/90°	Stainless Steel	1.8m/6'

1 Designates reinforced deflection section



ISO 9001 backed by the only 2-year warranty



For additional information call 800-329-9618 or visit www.karlstorzindustrial.com
 Karl Storz Industrial-America, Inc.
 600 Corporate Pointe
 Culver City, CA 90230-7600
 Phone: 800-329-9618 Fax: 310-410-2785
 Email: IndustrialSupport@karlstorzindustrial.com

ST33-905

STORZ
 KARL STORZ — ENDOSKOPE
 INDUSTRIAL GROUP